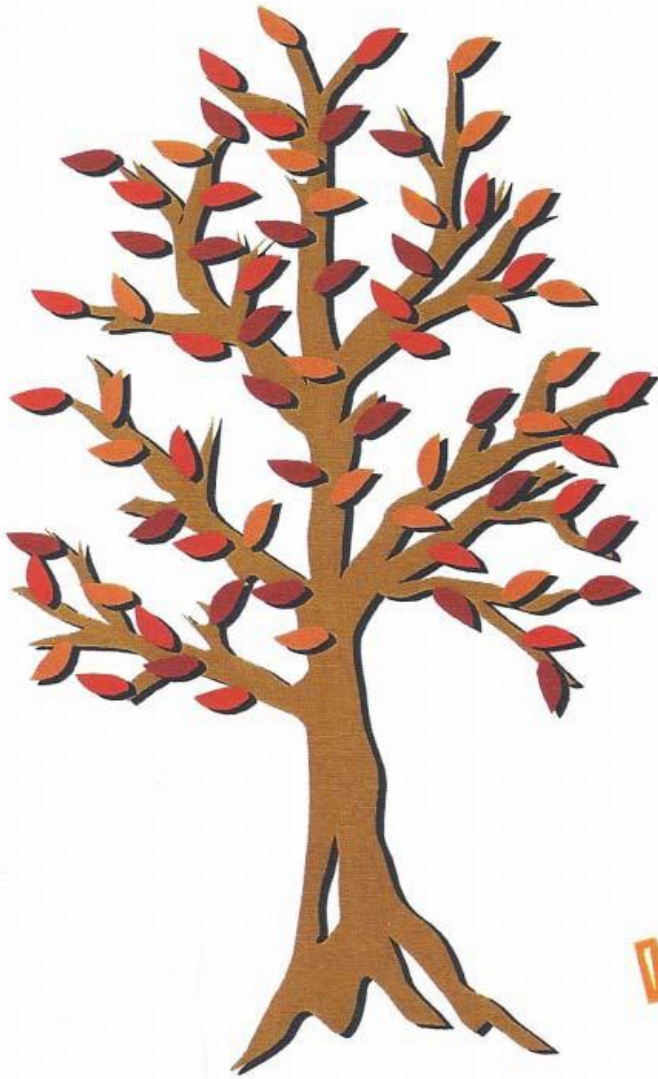


# 2012 Family Camp

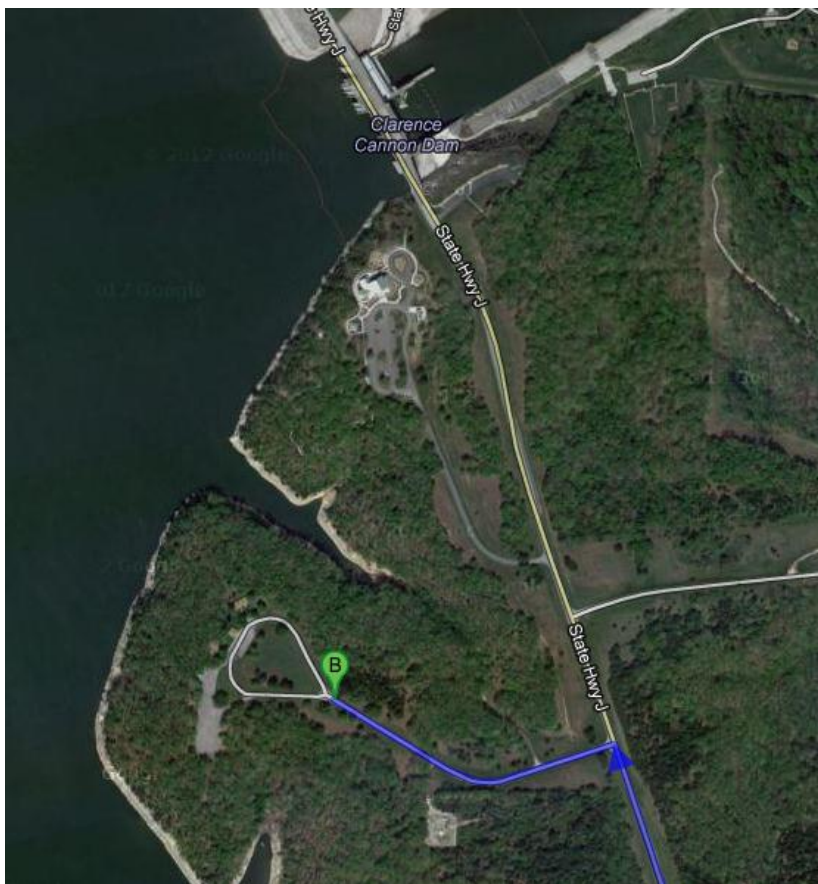
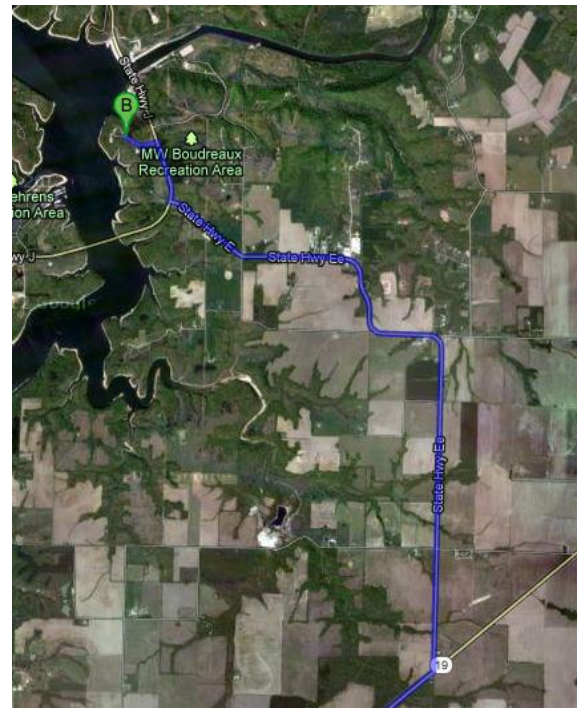
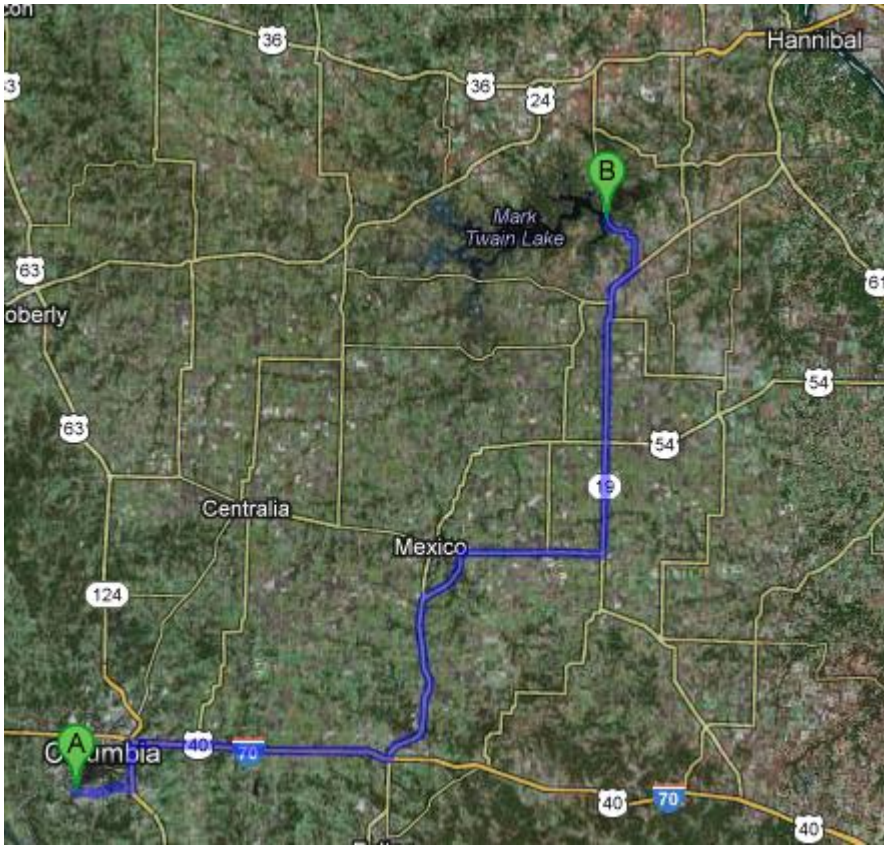
## October 6 & 7, 2012



### Information Packet

Mark Twain Lake: Briscoe Group Area

MARK TWAIN FAMILY CAMP (about 1hr 45min from Mill Creek Elem)



Directions: From Hwy 36

Turn south on Hwy J East of Monroe City Mo, after crossing the Mark Twain Dam take second right turn (west) at Briscoe Group use area.



Direction: From Hwy 19

Turn North on Hwy EE west of Center Mo. When meet Hwy J turn right continuing north.  
Turn Left (West) before the Mark Twain Dam at the Briscoe Use Area.

# Family Camp 2012

## Mark Twain Area

### Tentative Schedule

<u>DAY 1</u>	<u>Activity</u>	<u>Location</u>	<u>DAY 2</u>	<u>Activity</u>	<u>Location</u>
			7:15	Wake Up	Campsites
			8:00	Breakfast	
10:00 - 11:30	Check-in. campsite set up		8:45	Check-out	
11:45	Opening				
Noon-12:45	Lunch				
1:00 - 5:30	Open Activities**	Archery, BB, Crafts			
6:30	Flag Lowering & Dinner				
9:30	Lights-Out				

